

**Canon**

# Reimagine the Way You Print.

Fluorescent Pink Ink

Hits 99% of the colors in the PANTONE®  
FORMULA GUIDE solid coated

Intelligent Media Handling



**imagePROGRAF  
GP-4000/2000**

## Express Yourself Through Color with the New 10-Color Plus Fluorescent Pink Ink imagePROGRAF GP Series Large-Format Printers.

The GP Series ink has been specially formulated to create bright, bold images. Canon's "Radiant Infusion" technology layers the Fluorescent Pink Ink with other inks on the paper, resulting in bright and soft color reproduction.

With the new Red, Orange, Green, Violet, and Fluorescent Pink Inks, the imagePROGRAF GP-4000/2000 printers have the largest color gamut of any imagePROGRAF printer to date.



Fluorescent Pink Ink



Radiant Infusion



Intelligent Media Handling

### Building on imagePROGRAF core technologies, the GP Series has Canon innovations built right in.

#### COLOR CALIBRATION

Producing accurate color is critical when replicating company logos and brand colors. The built-in Color Calibration function uses a multisensor to read color density and calibrate the printer, so that the last print looks the same as the first.

#### INTELLIGENT MEDIA HANDLING

Simply set the roll holder in the printer and the media will automatically feed into the device—no need to manually enter media information! The printer will automatically detect the width, length, and type of media.

#### PANTONE® CALIBRATED

- The world's first PANTONE® Calibrated printers for PANTONE® PASTELS & NEONS GUIDE coated. The GP-4000/2000 printers can hit 97% of the colors in this guide.
- Can hit 99% of the colors in the PANTONE® FORMULA GUIDE solid coated.



#### SOFTWARE SOLUTIONS

Jam-packed with free available software, the imagePROGRAF GP Series has everything you need to print right out of the box.

- **PosterArtist Lite** is an easy-to-use, template-driven poster creation software. Create professional posters, banners, and signage in just four (4) easy steps. Choose from thousands of license-free images from third-party stock providers for complete poster customization!
- **Professional Print & Layout** is a workflow software that delivers enhanced layout settings, intuitive operation, preview, and color management for seamless photo printing.
- **Accounting Manager** helps track actual ink and media usage and costs for up to 50 devices.
- **Device Management Console** can color-calibrate a fleet of up to 50 imagePROGRAF large-format printers remotely.
- **And Much More!!**

## Markets and Applications

Reproduce light, delicate pastel colors and vivid fluorescent and neon colors to create visually stunning graphics and posters for various markets and applications.



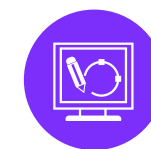
PROOFING



PRINT FOR PAY



ENTERTAINMENT INDUSTRIES



DESIGN DEPARTMENT



ADVERTISING COMPANIES

44" imagePROGRAF GP-4000



24" imagePROGRAF GP-2000



# TECHNICAL INFORMATION

imagePROGRAF  
GP-4000/2000

Printing Technology	FINE: Full-Photolithography Nozzle Engineering
Head Configuration	12-Channel Integrated Type
Nozzle Configuration	1,536 Nozzles x 12 Channels: 18,432 Total
Minimum Droplet Size	4 Picoliters per Color
Maximum Print Resolution	Up to 2400 x 1200 dpi
Ink Information	Type: Pigment-Based GP Ink Technology PFI-2100 (160 ml): FP, R, O, G, V, PBK, MBK, C, M, Y, GY PFI-2300 (330 ml): FP, R, O, G, V, PBK, MBK, C, M, Y, GY PFI-2700 (700 ml): FP, R, O, G, V, PBK, MBK, C, M, Y, GY
Print Head	PF-10 (I)
Colors	Fluorescent Pink, Red, Orange, Green, Violet, Photo Black, Matte Black, Cyan, Magenta, Yellow, Gray
Ink Tank Shipped with Printer	10 Colors + Fluorescent Pink GP-4000: 330 ml Ink Tank, Each Color GP-2000: 330 ml (MBK); 160 ml (All Other Colors)
Hard Disk Capacity	500 GB
Printer Memory	3 GB
Printer Stand	Standard
Display	4.3" Color LCD Touch-screen
Size/Weight (with basket open)	GP-4000: 46" (H) x 63" (W) x 39" (D)/Approx. 274 lb. GP-2000: 46" (H) x 44" (W) x 39" (D)/Approx. 225 lb.
Media Feed	Front-Loading Roll Feed: One Roll, Front Output
Media Width	GP-4000: 6" - 44" (Cut-Sheet and Roll) GP-2000: 6" - 24" (Cut-Sheet and Roll)
Minimum Media Length	8"
Maximum Print Length*	59' (Roll Paper) 84" (Cut-Sheet)
Borderless Printing Widths	Custom Roll Width 6" - 44" (Max. Width Depending on Printer) with Micro Margin Technology
Media Thickness	.07 mm - .8 mm
Media Core Sizes	2" or 3" Core (with Supplied Adaptor)
Printable Margins	Roll Paper: Top: 20 mm; Bottom: 3 mm; Side: 3 mm Cut-Sheet: Top: 20 mm; Bottom: 20 mm; Side: 3 mm
Maximum Media Roll (Outer Dia.)	6.7" (170 mm)

Interfaces	Hi-Speed USB, 10/100/1000Base-T/TX, Wireless LAN (IEEE 802.11 b/g/n)**
Recommended Operating Environment*	Temperature: 59° - 86° F (15° - 30° C) Humidity: 10 - 80% (No Condensation)
Power Supply	AC 100-240 V (50-60 Hz)
Power Consumption Maximum:	GP-4000: 99 W or Less GP-2000: 84 W or Less
Standby Power Off:	2.0 W or Less 0.3 W or Less
Software	PosterArtist Lite (PC Only), Professional Print & Layout,** Free Layout plus (PC Only), Printer Driver Extra Kit (PC Only), Accounting Manager, Media Configuration Tool, Direct Print Plus (PC Only), Device Management Console, Quick Utility Toolbox, Canon PRINT Inkjet/SELPHY, Canon Print Service (Android Only), Easy-PhotoPrint Editor
Optional Software	PosterArtist (PC Only)
OS Compatibility	32-bit: Windows® 7/8.1/10 64-bit: Windows® 7, Windows® 8.1, Windows® 10, Windows® Server 2008 R2, Windows® Server 2012/2012R, Windows® Server 2016, Windows® Server 2019, Mac OS X 10.12.6 or Later
User-Replaceable Items	Print Head (PF-10) Maintenance Cartridge (MC-30) Rotary Cutter (CT-07)
Options	GP-4000: Multifunction Roll System (RU-43) Roll Holder Set (RH2-46) GP-2000: Multifunction Roll System (RU-23) Roll Holder Set (RH2-29)

For a complete listing of specifications, please visit [usa.canon.com/largeformat](http://usa.canon.com/largeformat).

- \* The maximum printable length varies, depending on the application, OS, and RIP used.
  - \*\* Wireless printing requires a working network with wireless 802.11b/g or 802.11n capability. Wireless performance may vary based on terrain and distance between the printer and wireless network clients.
  - For the temperature and humidity conditions of papers, refer to the paper's packaging or the supplied instructions.
  - Professional Print & Layout plug-in software is compatible with Adobe® Photoshop CC 2015-CC 2019 or later, Adobe Photoshop Lightroom V6.X, CC 2015-CC 2019 or later, Classic CC, Photoshop Elements 15, 2018, 2019 or later, and Canon Digital Professional 4.92 or later.
- Note: Model shown on cover is the imagePROGRAF GP-4000 with optional Multifunction Roll System.

BINDING & LAMINATING  
**SOUTHWEST**  
COME TOGETHER. RIGHT NOW.

Southwest Binding & Laminating | P.O. Box 150 Maryland Heights, MO 63043-9150 | (314) 739-4400  
Nationwide Toll Free Line (800) 325-3628 | Toll Free Fax (800) 942-2010 | [www.swbindinglaminating.com](http://www.swbindinglaminating.com)

 [usa.canon.com/imagePROGRAF](http://usa.canon.com/imagePROGRAF)



**Canon**

Canon and imagePROGRAF are registered trademarks of Canon Inc. in the United States and may also be registered trademarks or trademarks in other countries. All other referenced product names and marks are trademarks of their respective owners. PANTONE® is a trademark or registered trademark of PANTONE® LLC in the United States and/or other countries. As of September 27, 2021, according to professional services performed by PANTONE® under License Agreement between Canon, Inc. and PANTONE® LLC. PANTONE® PASTELS & NEONS GUIDE Coated color gamut coverage rate is 97% for GP-4000/GP-2000 when using Photo Paper Pro Premium Platinum with imagePROGRAF printer driver at [Poster/Photo (Fluorescent)] [Highest] (600 dpi). PANTONE® Colors generated may not match PANTONE®-identified standards. Consult current PANTONE® Publications for accurate color. All printer output is simulated. Specifications and availability subject to change without notice. Not responsible for typographical errors.  
©2021 Canon U.S.A., Inc. All rights reserved.  
1021R1-GP-4000/2000BRO-PDF-IH

  
PANTONE  
Digital Color

  
FINE  
Full-photolithography Inkjet  
Nozzle Engineering